

# COMBO

---

MODULAR SHOWCASE



# Flexible Modular Showcase System



COMBO is our new modular museum showcase system, designed for elegant single or multi-module display arrangements. Its clean aesthetic is paired with high conservation performance, including passive climate control and a very low air exchange rate. Each module can be fitted with optional lighting and shelving to suit the object and curatorial concept perfectly. Flexible, robust and easy to handle, COMBO offers museums and heritage a sophisticated and scalable display solution.



## Description of COMBO Modular Case

Module dimension: **90 x 90 x 210 cm**

Glass parameters:

Glass 55.4 (11,5mm) thickness, 4 x PVB films: 5 mm glass / 1,52 mm PVB / 5 mm glass

As an option 66.4 (13,5) thickness, 4 x PVB films: 6 mm glass / 1,52 mm PVB / 6 mm glass

Standard:

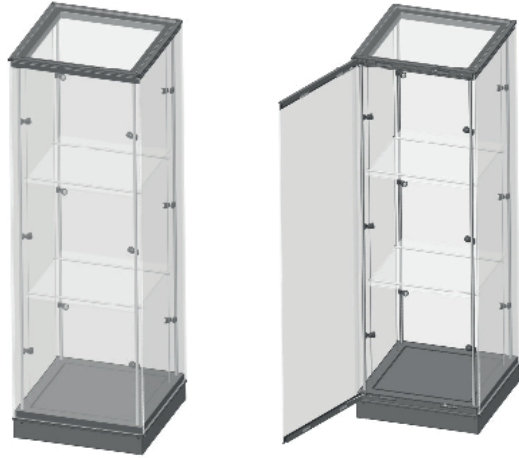
- Hinged door
- 0,1 AER
- Passive climate control
- movable with pallet jack

Options:

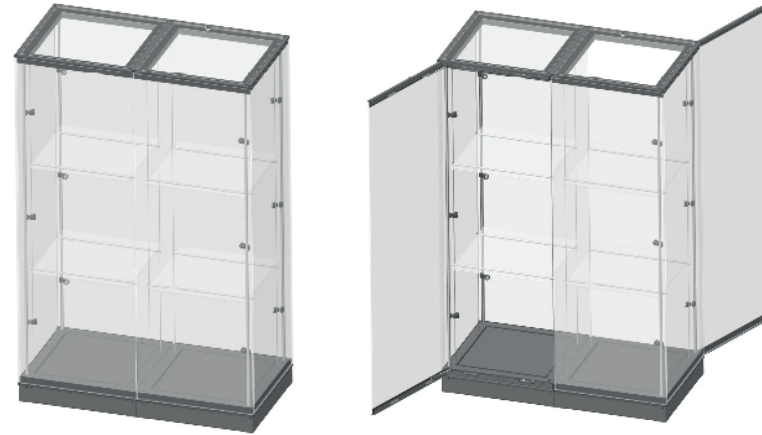
- Lighting (top and/or bottom or on sides)
- Shelves
- Glass P6B

# Examples of Module Configuration

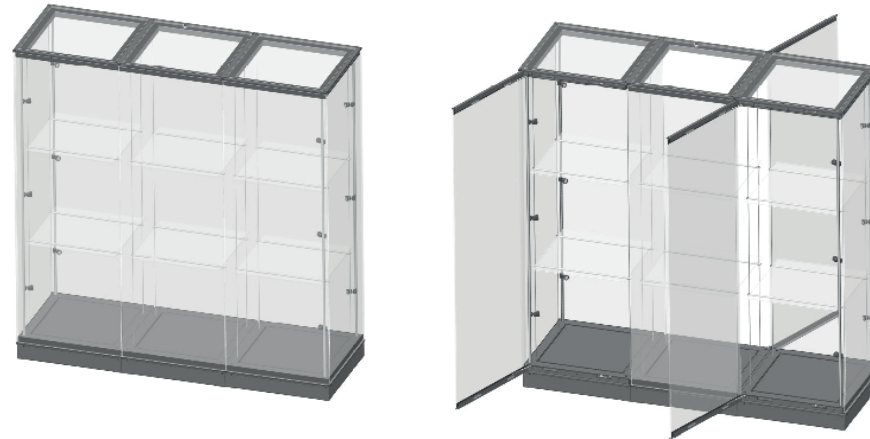
Single module



Double module



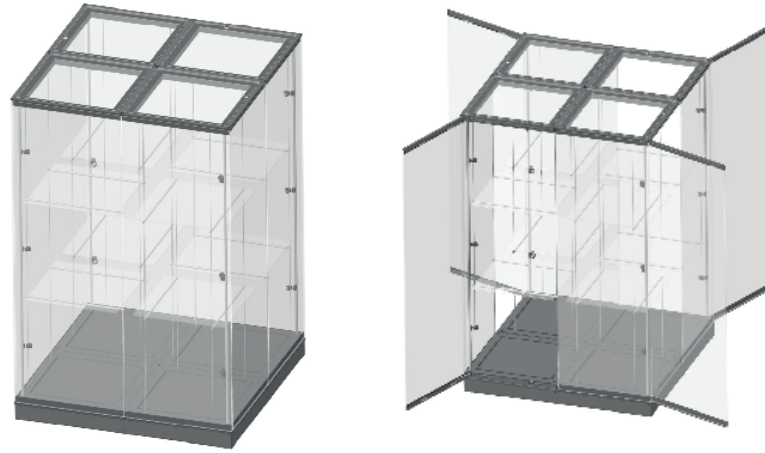
Triple module



The modular showcase allows for construction of complex showcases in various shapes, composed of multiple modules. Each module can be independently equipped with internal lighting and shelving.

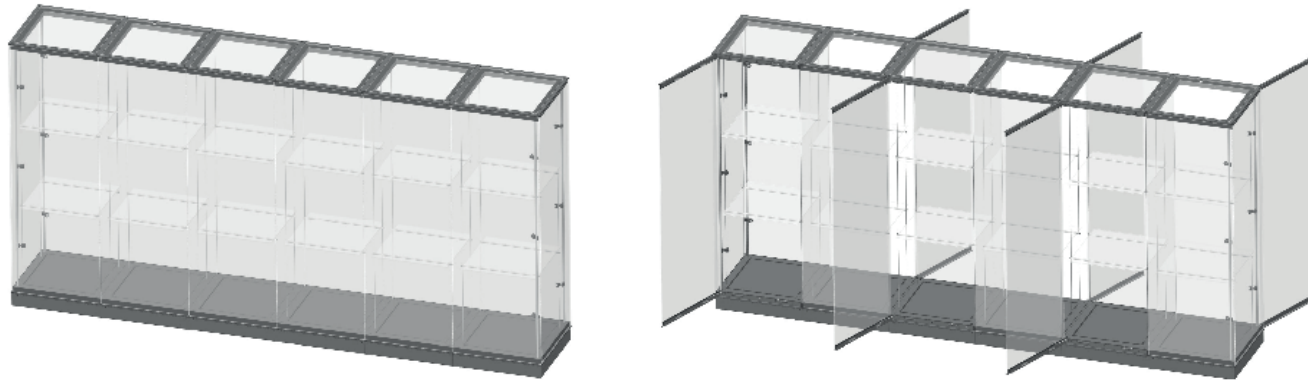


Quadruple module



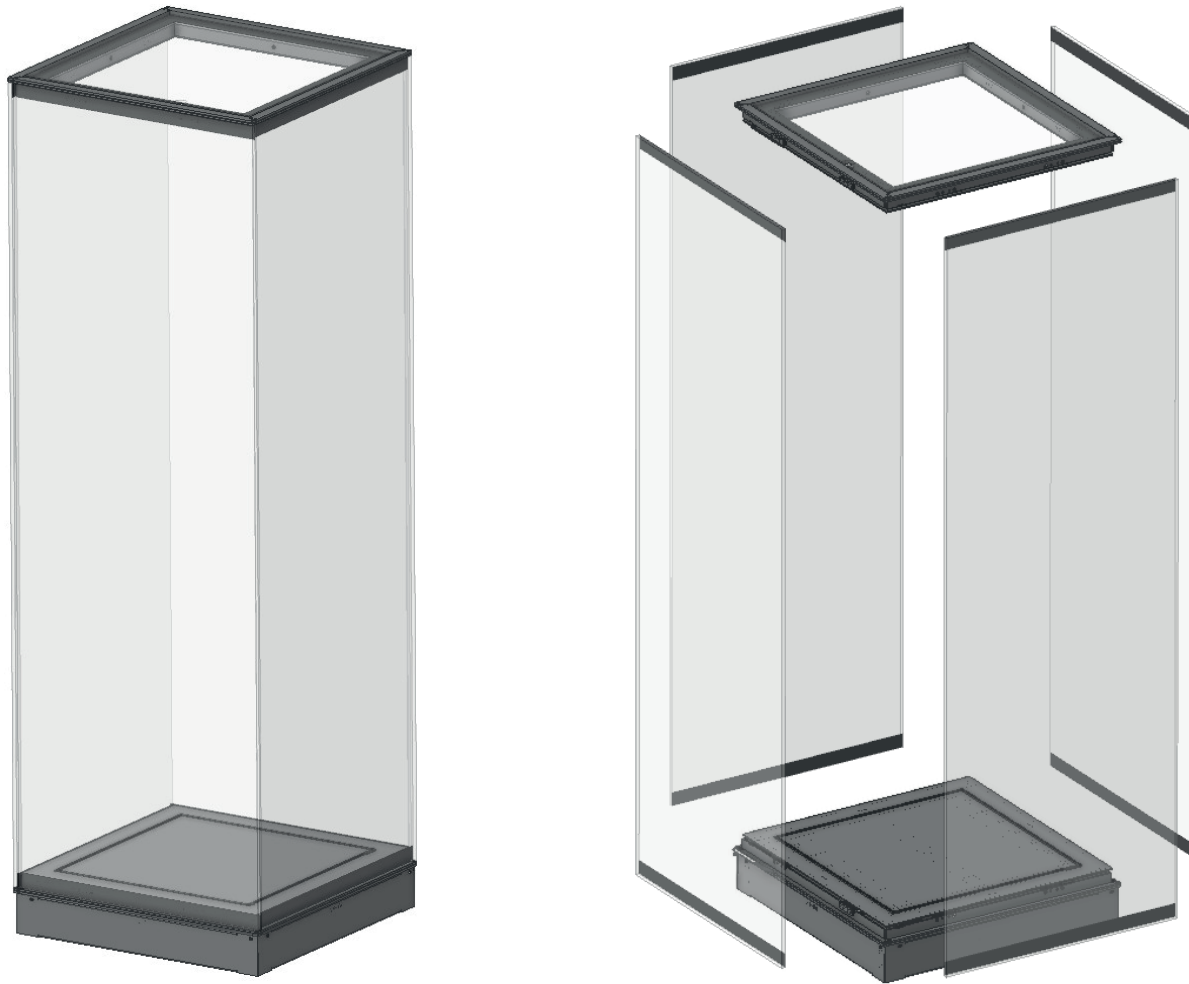
Much more  
module  
configurations  
possible...

Six modules in a row



# DISPLAY CASE - COMBO

Exploded view



Specification of the frame (metal, dimensions, coatings):

Aluminum and steel custom-made profiles, cut using a CNC laser machine, are assembled into one piece mainly by gluing and bolting. All metal elements are powder-coated in the requested RAL colour.



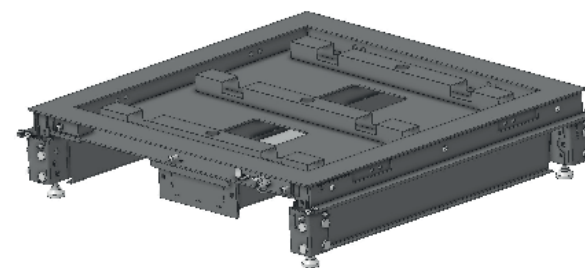
Top frame



Base frame

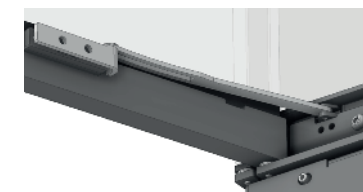
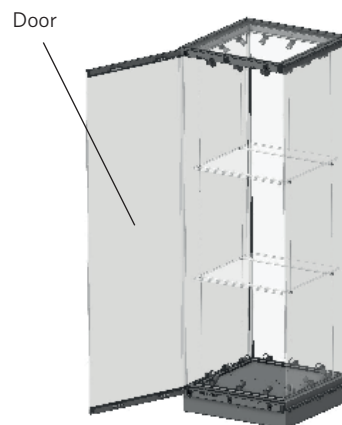
Specification of baseboard:

Single-segment element made of metal/aluminum structural profiles, powder-coated in requested RAL color.



Opening & Access:

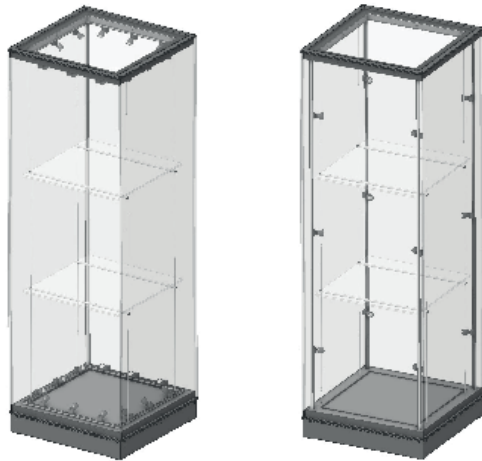
Hinged door, French-style opening, with opening restrictor. Opening angle of 110°. Left- or right-hand opening available on request.



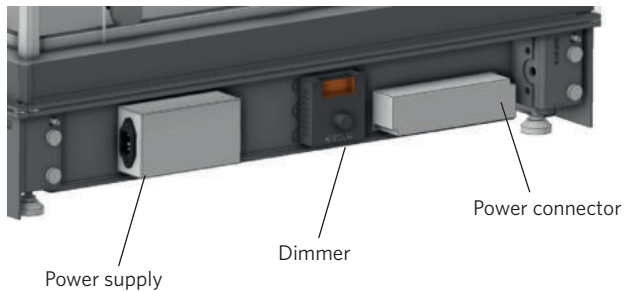
# Lighting

Details of the power supply and lighting:

The power cable and electrical compartment are located at the bottom of the display cabinet, concealed by a removable plinth. Access to the compartment does not require the door to be opened. The lighting system is fitted with a manual dimmer switch. Each module is equipped with independent electrical modules offering the same functionality.



Power supply location



# Shelving

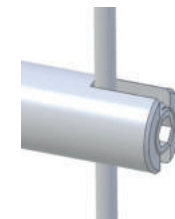
Shelving units with a suspension system:

The shelving units can be fitted with two glass shelves as an option. The system consists of taut stainless steel cables fitted with clamps to prevent any sideways swaying.



Shelves:

- 10 mm thick extra-clear glass
- maximum load of 10 kg per shelf

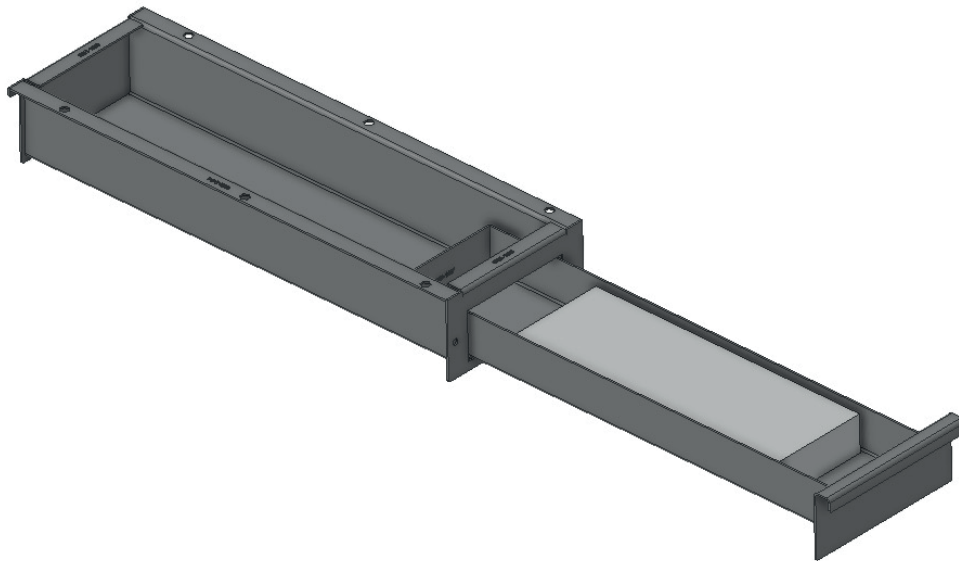
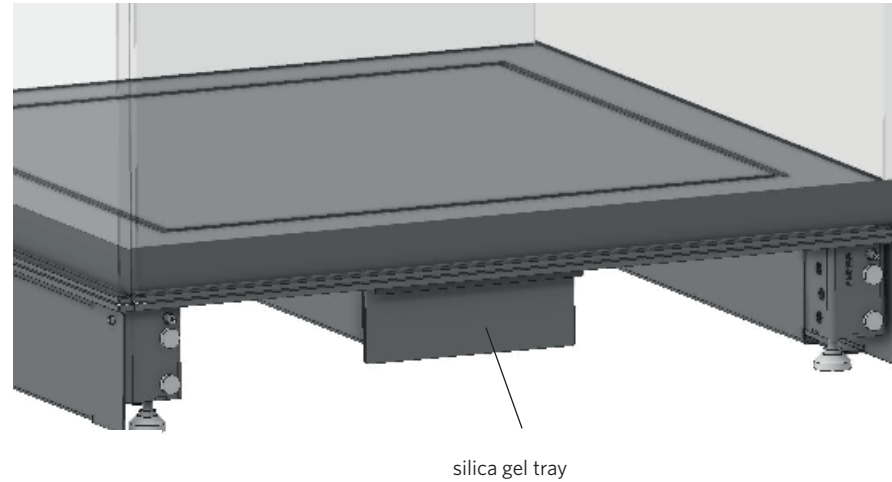


# Climate control

Passive climate control:

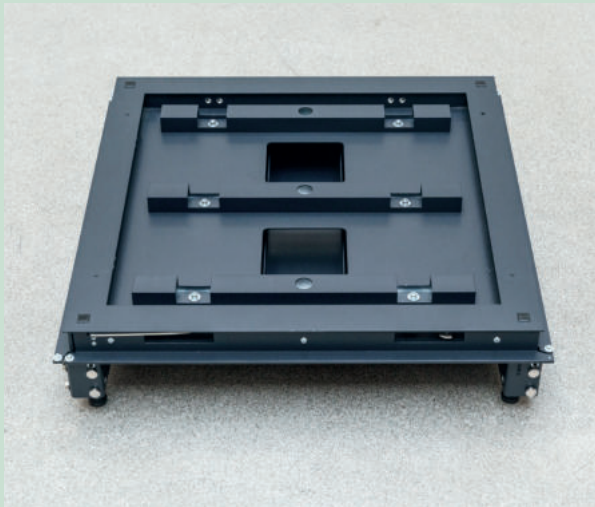
The climate control system is regulated by a desiccant unit to be placed inside the drawer (separate access from the display cabinet). A removable panel conceals this technical compartment.

Details of the silica gel drawer and a diagram showing its location are attached.



The silica gel drawer can hold two 950 g Prosorb® cartridges (333 x 110 x 43 mm). A separate compartment accessible via the base of the display cabinet.

**Air exchange rate (AER): 0,1 air exchange per day**





FRANK Europe GmbH  
Schwabenheimer Weg 111  
55543 Bad Kreuznach  
  
Tel.: +49 (0) 671 79 656 0  
info@frankeurope.com

